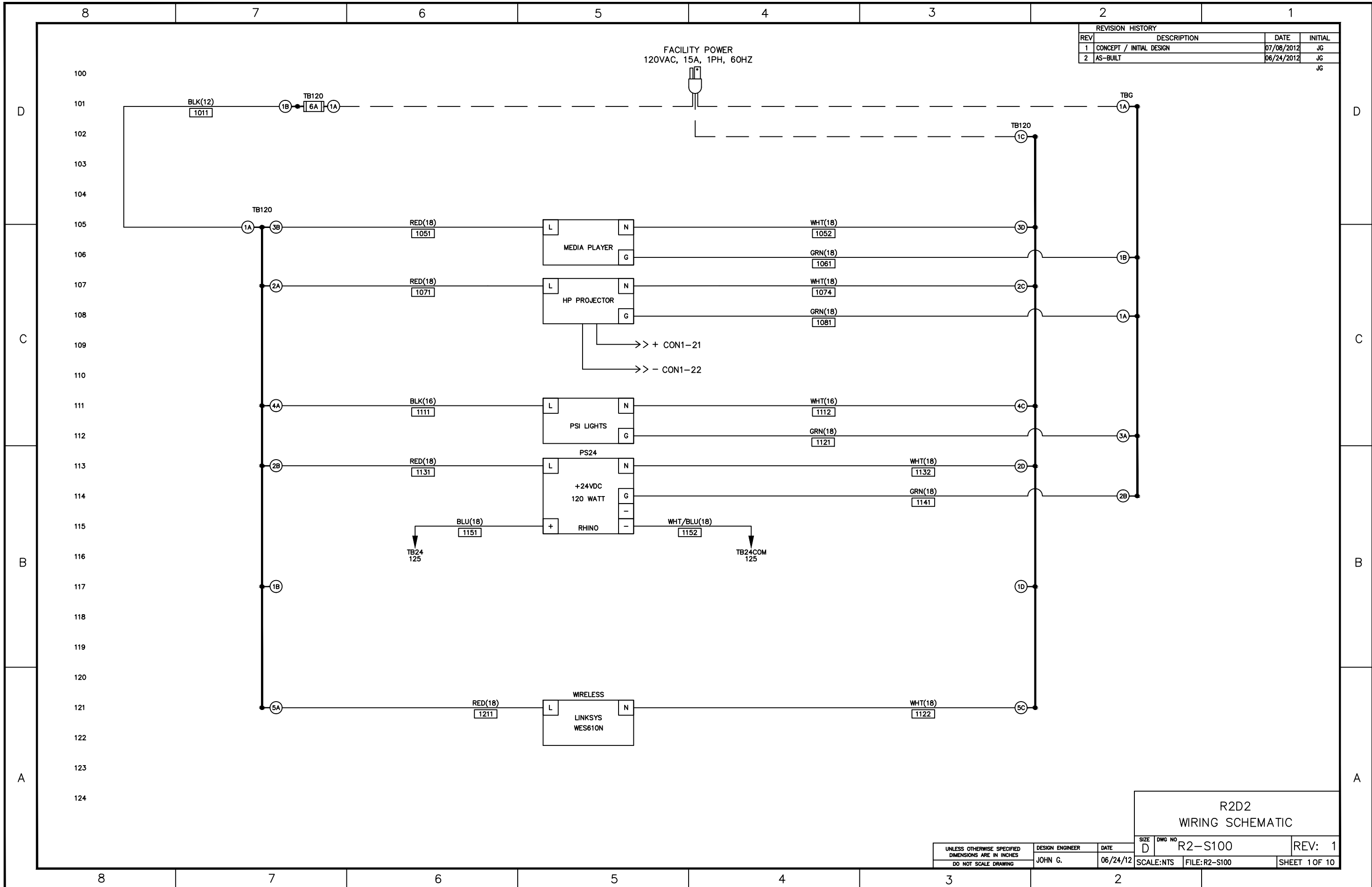
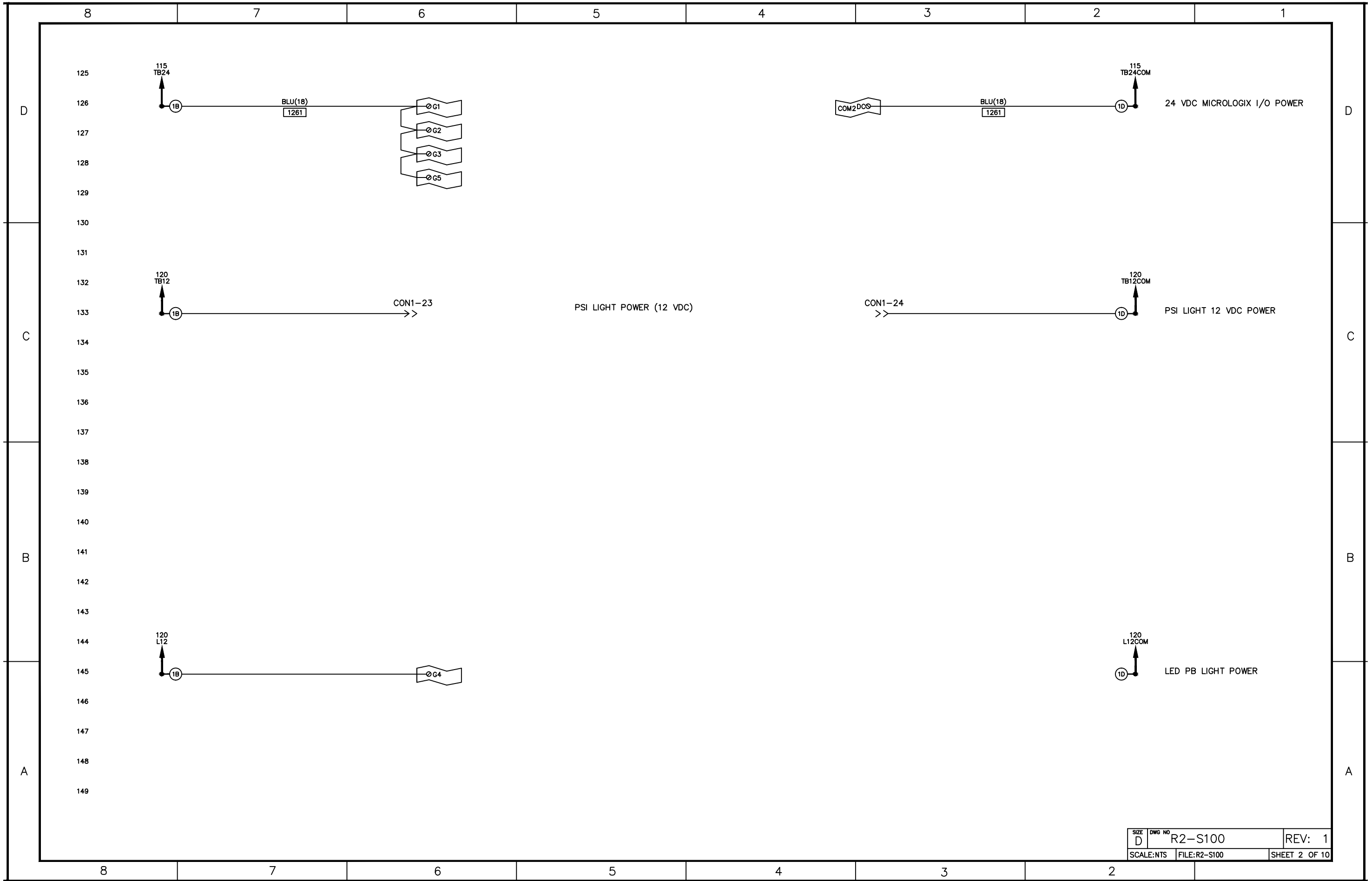


REVISION HISTORY			
REV	DESCRIPTION	DATE	INITIAL
1	CONCEPT / INITIAL DESIGN	07/08/2012	JG
2	AS-BUILT	06/24/2012	JG

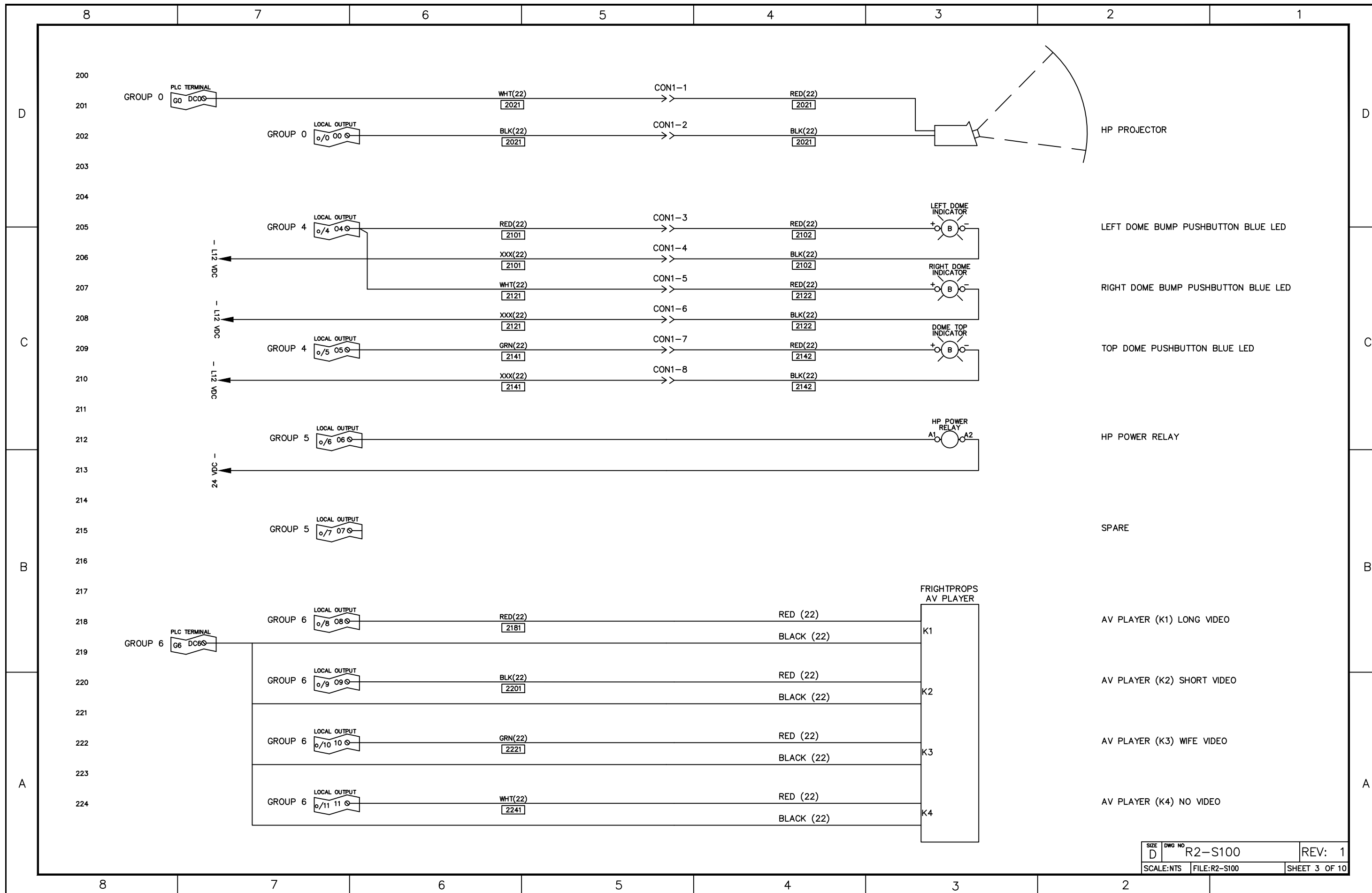


**R2D2
WIRING SCHEMATIC**

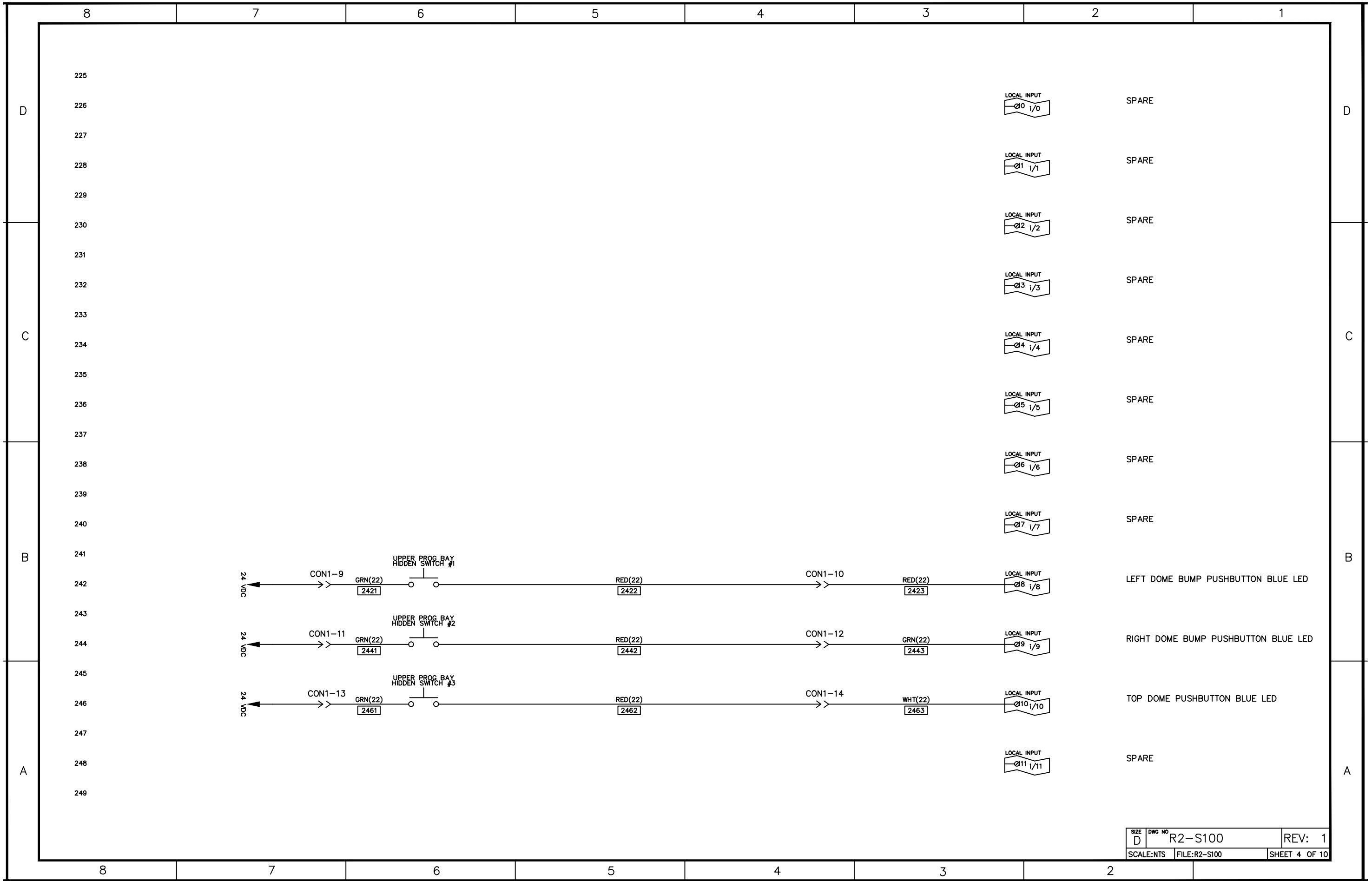
SIZE	DWG NO	REV:
D	R2-S100	1
UNLESS OTHERWISE SPECIFIED DIMENSIONS ARE IN INCHES DO NOT SCALE DRAWING	DESIGN ENGINEER JOHN G.	DATE 06/24/12
SCALE: NTS	FILE: R2-S100	SHEET 1 OF 10



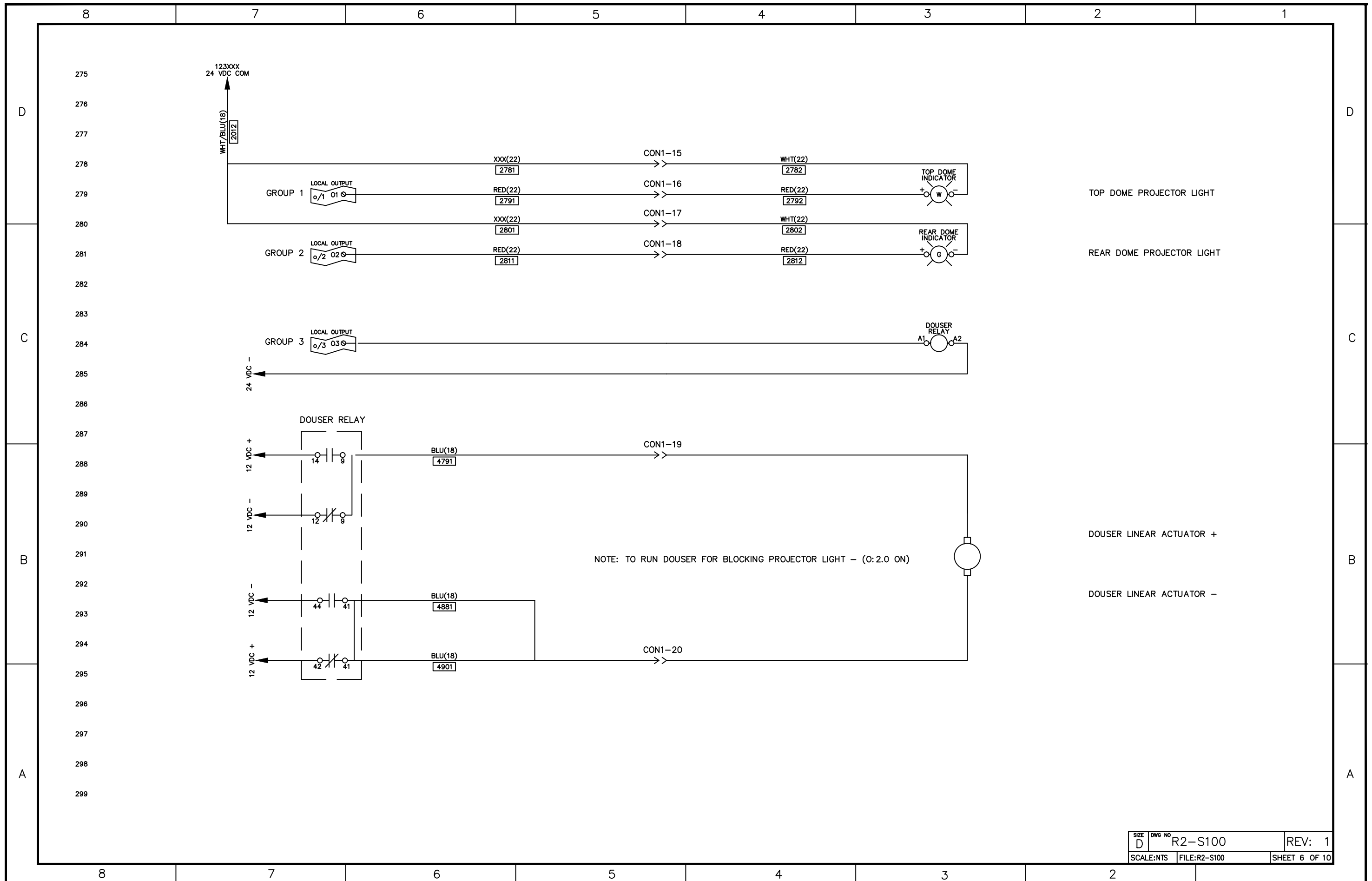
SIZE D	DWG NO R2-S100	REV: 1
SCALE: NTS	FILE: R2-S100	SHEET 2 OF 10

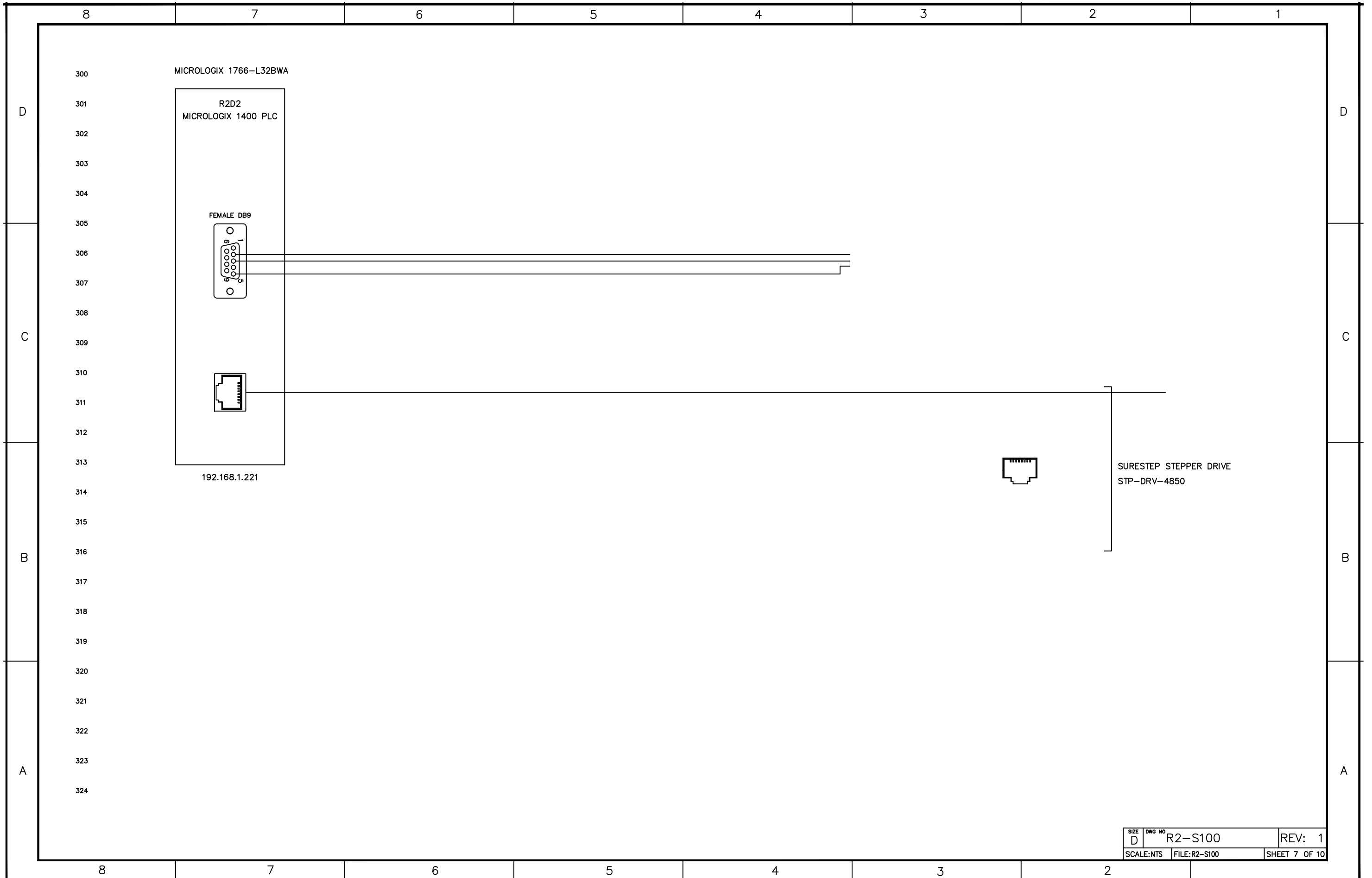


SIZE	D	DWG NO	R2-S100	REV:	1
SCALE:	NTS	FILE:	R2-S100	SHEET	3 OF 10

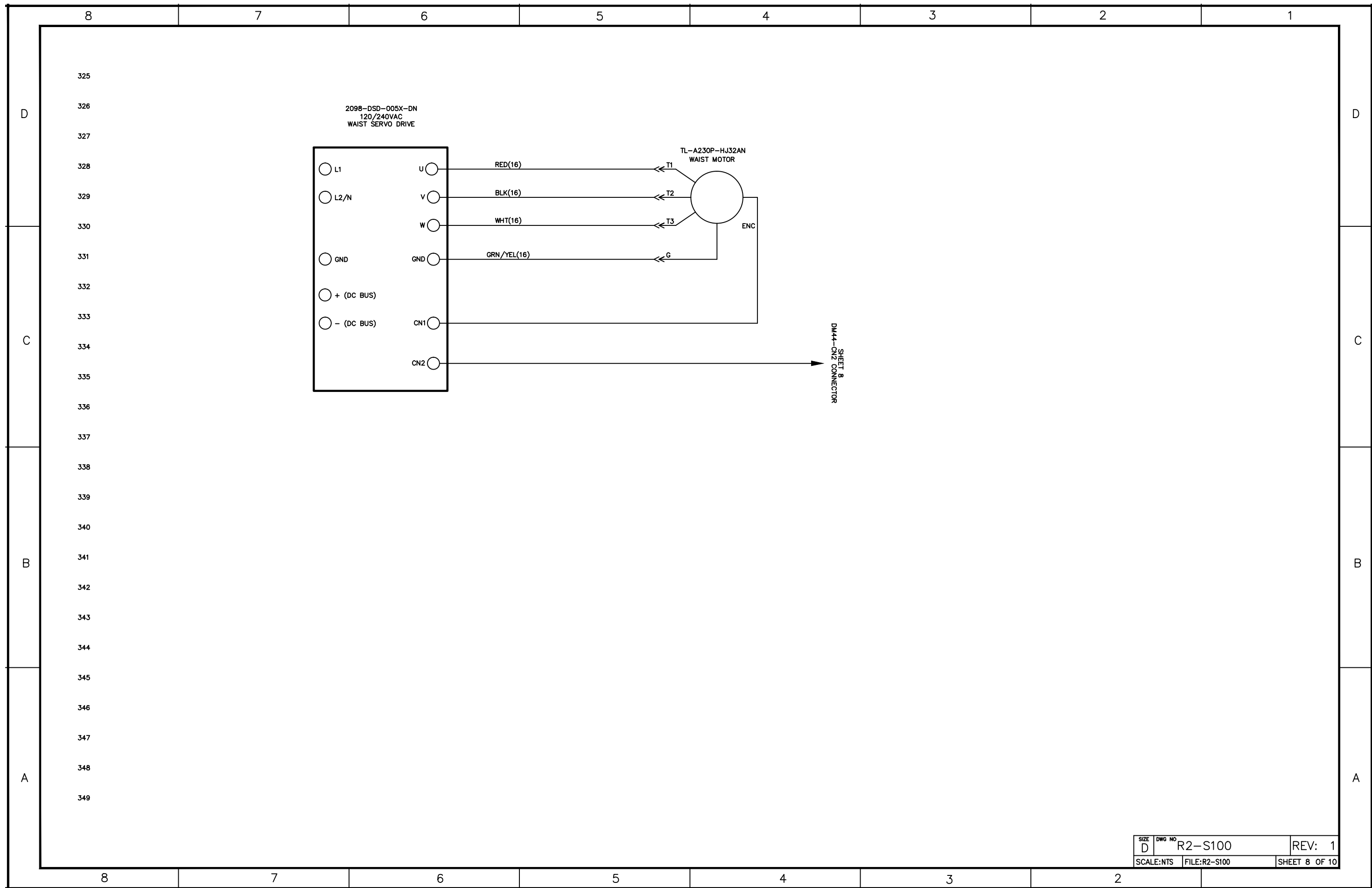








SIZE D	DWG NO R2-S100	REV: 1
SCALE: NTS	FILE: R2-S100	SHEET 7 OF 10



2098-DSD-005X-DN
120/240VAC
WAIST SERVO DRIVE

TL-A230P-HJ32AN
WAIST MOTOR

SHEET 8
DM44-CN2 CONNECTOR

SIZE D	DWG NO R2-S100	REV: 1
SCALE: NTS	FILE: R2-S100	SHEET 8 OF 10

8

7

6

5

4

3

2

1

D

D

GROUP	CONNECTOR	i/o POINT	TYPE	BUS	WIRE #	DESCRIPTION
0	-	0:1.0	RELAY	NONE	-	PROJECTOR START
1	-	0:1.1	RELAY	NONE	-	TOP DOME PROJECTOR LIGHT (24 VDC)
2	-	0:1.2	RELAY	NONE	-	REAR DOME PROJECTOR LIGHT (24 VDC)
3	-	0:1.3	RELAY	NONE	-	DOUSER RELAY (ENERGIZED = IN) (24 VDC)
4	-	0:1.4	RELAY	12 VDC	-	LEFT DOME BUMP PUSHBUTTON BLUE LED
4	-	0:1.5	RELAY	12 VDC	-	RIGHT DOME BUMP PUSHBUTTON BLUE LED
5	-	0:1.6	RELAY	12 VDC	-	TOP DOME PUSHBUTTON BLUE LED
5	-	0:1.7	RELAY	NONE	-	SPARE
5	-	0:1.8	RELAY	NONE	2181	AV PLAYER (K1) LONG VIDEO
6	-	0:1.9	RELAY	NONE	2201	AV PLAYER (K2) SHORT VIDEO
6	-	0:1.10	RELAY	NONE	2221	AV PLAYER (K3) WIFE VIDEO
6	-	0:1.11	RELAY	NONE	2241	AV PLAYER (K4) NO VIDEO

C

C

GROUP	CONNECTOR	i/o POINT	TYPE	BUS	WIRE #	DESCRIPTION
0	-	i/0	SINKING	NONE	-	SPARE
0	-	i/1	SINKING	NONE	-	SPARE
0	-	i/2	SINKING	NONE	-	SPARE
0	-	i/3	SINKING	NONE	-	SPARE
1	-	i/4	SINKING	NONE	-	SPARE
1	-	i/5	SINKING	NONE	-	SPARE
1	-	i/6	SINKING	NONE	-	SPARE
1	-	i/7	SINKING	NONE	-	SPARE
2	-	i/8	SINKING	NONE	-	LEFT DOME BUMP PUSHBUTTON
2	-	i/9	SINKING	NONE	-	RIGHT DOME BUMP PUSHBUTTON
2	-	i/10	SINKING	NONE	-	TOP OF DOME PUSHBUTTON
2	-	i/11	SINKING	NONE	-	SPARE
3	-	i/12	SINKING	NONE	-	SPARE
3	-	i/13	SINKING	NONE	-	SPARE
3	-	i/14	SINKING	NONE	-	SPARE
3	-	i/15	SINKING	NONE	-	SPARE
3	-	i/16	SINKING	NONE	-	SPARE
3	-	i/17	SINKING	NONE	-	SPARE
3	-	i/18	SINKING	NONE	-	SPARE
3	-	i/19	SINKING	NONE	-	SPARE

B

B

A

A

SIZE D	DWG NO R2-S100	REV: 1
SCALE: NTS	FILE: R2-S100	SHEET 9 OF 10

8

7

6

5

4

3

2

CONNECTOR	PIN	DESCRIPTION
CN1	1	DC 0 – HP PROJECTOR START
CN1	2	OUTPUT 0 – HP PROJECTOR START
CN1	3	OUTPUT 4 – LEFT DOME BUMP PUSHBUTTON BLUE LED
CN1	4	12 VDC COM
CN1	5	OUTPUT 5 – RIGHT DOME BUMP PUSHBUTTON BLUE LED
CN1	6	12 VDC COM
CN1	7	OUTPUT 6 – TOP DOME PUSHBUTTON BLUE LED
CN1	8	12 VDC COM
CN1	9	LEFT DOME BUMP PUSHBUTTON 24 VDC
CN1	10	LEFT DOME BUMP PUSHBUTTON INPUT 8
CN1	11	RIGHT DOME BUMP PUSHBUTTON 24 VDC
CN1	12	RIGHT DOME BUMP PUSHBUTTON INPUT 9
CN1	13	TOP DOME BUMP PUSHBUTTON 24 VDC
CN1	14	TOP DOME BUMP PUSHBUTTON INPUT 10
CN1	15	24 VDC COM
CN1	16	OUTPUT 1 – TOP DOME PROJECTOR LIGHT
CN1	17	24 VDC COM
CN1	18	OUTPUT 2 – REAR DOME PROJECTOR LIGHT
CN1	19	DOUSER VOLTAGE
CN1	20	DOUSER VOLTAGE
CN1	21	PROJECTOR POWER +
CN1	22	PROJECTOR POWER –
CN1	23	PSI LIGHT 12 VDC POWER +
CN1	24	PSI LIGHT 12 VDC POWER –
CN1	25	24 VDC COM